



Product datasheet

Goat Anti-Human IgG H&L (FITC)

Overview

Product name	Goat Anti-Human IgG H&L (FITC) (GP03-F)
Host species	Goat
Target species	Human
Tested applications	Suitable for: Flow cytometry, ICC, IHC-Fr, IHC-P
Immunogen	Human IgG, whole molecule
Conjugation	FITC

Properties

Form	Liquid
Storage instructions	Shipped at 4 °C. Store at 4 °C. Avoid freezing. Store at dark.
Storage buffer	Phosphate buffered saline pH 7.4, contains stabilizer and ≤0.09% sodium azide.
Purity	Immunogen affinity purified
Purification notes	This product was prepared from monospecific antiserum by immunoaffinity chromatography using IgG (Human) coupled to Sepharose 4B.
Conjugation notes	Fluorescein isothiocyanate (FITC)
Clonality	Polyclonal
Isotype	IgG
General notes	Centrifuge product if not completely clear after standing at room temperature. This product is stable before the expiry date at 4 °C as an undiluted liquid. Dilute only prior to immediate use. Our customer's feedback says the antibody worked great. If in case the antibody fails to give results then please contact our scientific support team for assistance.

Applications

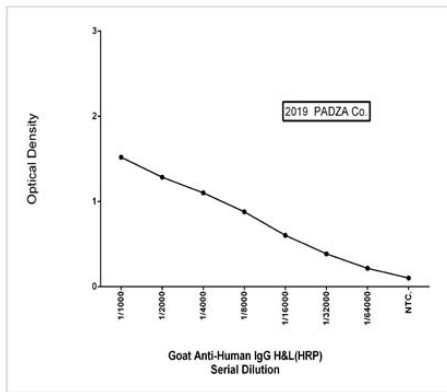
The application notes include recommended starting dilutions; optimal dilutions/concentrations should be determined by the end-user.

Product Usage Information:

Application Dilutions

Immunohistochemistry (Paraffin)	1/2000-1/1000
Immunohistochemistry (Frozen)	1/2000-1/1000
Immunofluorescence	1/2000-1/1000
Flow Cytometry	1/2000-1/1000

Please note: All products are "FOR RESEARCH USE ONLY. NOT FOR USE IN DIAGNOSTIC PROCEDURES"



This product was tested by direct ELISA, where wells were coated with Human IgG (10µg/ml) for overnight(12hours), followed by a 2 hour blocking step (2.5% Skim Milk). The antibody was added with serially diluted (1:1000 -1:64000) for 2 hours and detected by -HRP. Signal was developed by TMB substrate.